

KS3 Geography

Why do people live near volcanoes?

with Miss Laura

m2r online tutors

www.m2ronlinetutors.com

Why do people live near volcanoes?

Starter:

- Can you put these words back together to form volcano related vocabulary.
- There are 8 words to find



mag	sure	pyro	cra
erup	comp	cha	tec
fis	tion	ma	ter
clastic	tonic	mber	osite

Challenge:

- Write down the meanings of the words too.

What risks can you think of living next to a volcano?



Task: Have a look at these different statements and work out if they are positive or negative reasons to live near a volcano

Fertile soils that can be used to grow crops such as grapes or oranges	Volcanic bombs can destroy anything that they land on
Air pollution from constant eruptions of the volcano which give out sulphur	Some of the heated mud areas around the volcano can be used to cure aches and pains
Power that can be created from the heat underneath the Earth	Gases given off by the volcano can often suffocate people
Tourists coming to see the volcano and having tours to the top	Heavy mudflows caused by eruptions move at 100km/hour
Area can be quickly cut off as lava flows cover roads and railways	Pyroclastic flows (mixture of hot gases and rocks) move so fast that nobody can get out of the way
Dust from eruptions can cover farmland and starve crops of light	Metals (such as iron or copper) can be dug out of the ground

You can colour code them or use the space on your worksheet

Positive

Negative



Social

Can we now sort these statements into categories:

- Social (to do with population and people)
- Environmental (to do with the environment and land around)
- Economic (to do with money or goods)

Do any fit in more than one?

Economic

Environmental

Which do you think is the most important reason why people live next to volcanoes and why?



Here are some sentence starters for you to use if you want to:

The most important reason why people would live near a volcano is

This is important because

However, some of the risks are

But these could be managed by

Challenge: Can you think of any examples of places in the world where those things have happened?

Extension: match these images with the correct statements.

Lava and the weathered material (rock naturally broken down) from nutrient rich soil that can be cultivated to produce healthy crops and high yield harvests.

The soil naturally contains:

- Potassium
- Nitrogen
- Sulphur

Local people will collect the ash to turn into new products. the ash is very rich in nutrients and some people swear by these ingredients.

These are collected and sold in shops. They can help to generate an income as tourists will want authentic products to take home with them.

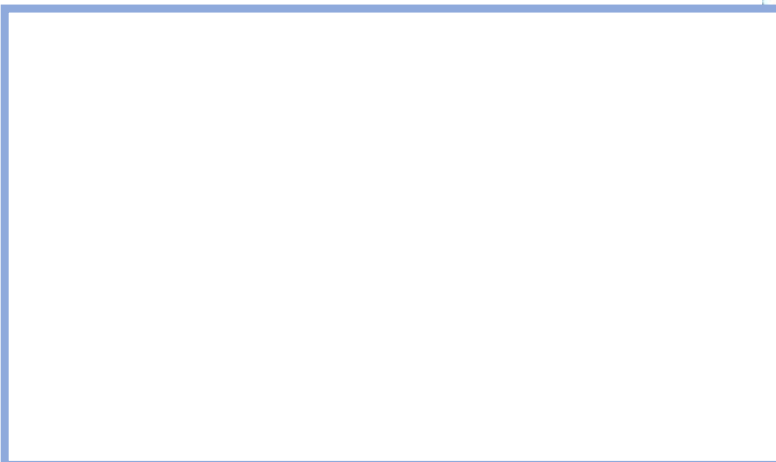
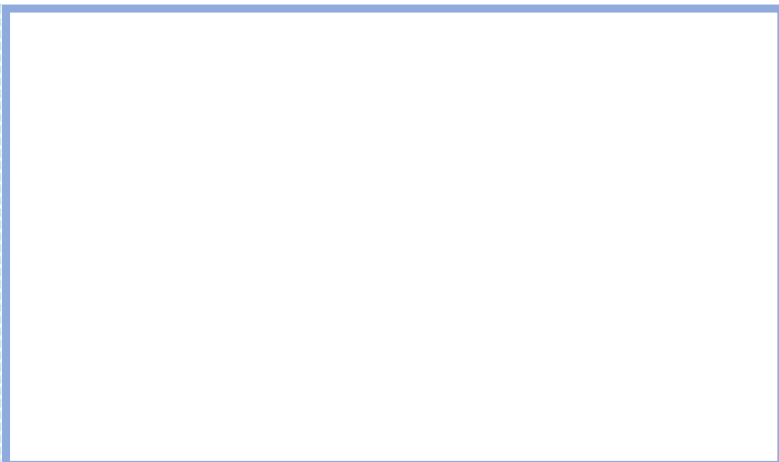
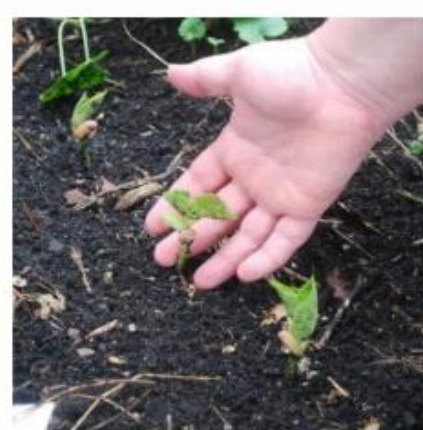
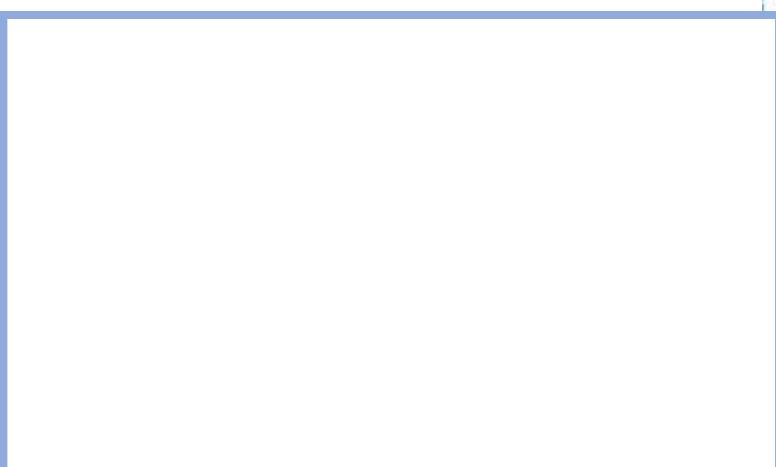
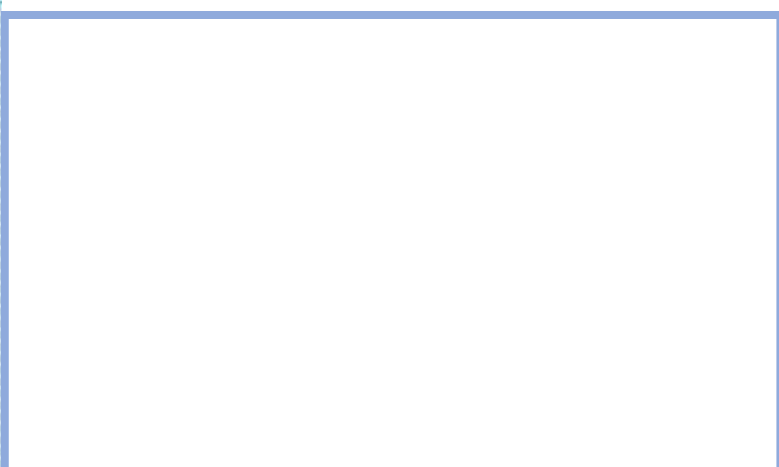
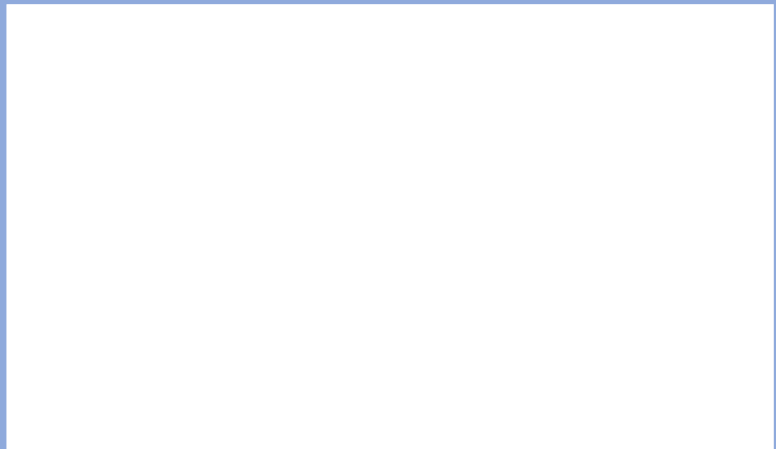
The steam is used to drive turbines in geothermal power stations producing energy for domestic and industrial use.

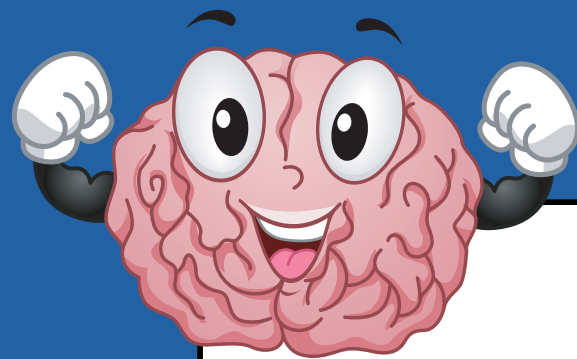
In countries such as Iceland this is the main source of power it is cheap and kind to the environment as it uses natural sources of fuel (heat from the earth).

When found these can generate an income for people. Others may come to search for these. Shops in the local area will stock these. Mining in volcanic areas also employs a large number of people.

This creates many jobs for local people as they could work as tour guides, in hotels and restaurants and in shops.







And we're done
for the day!

Want more lessons with Miss Laura?

onlinetutors@m2rglobal.com

+44 (0) 1924 201973 / +44 (0) 7770 865741

m2r online tutors